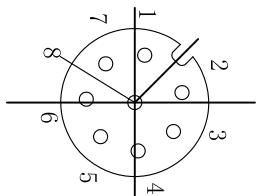
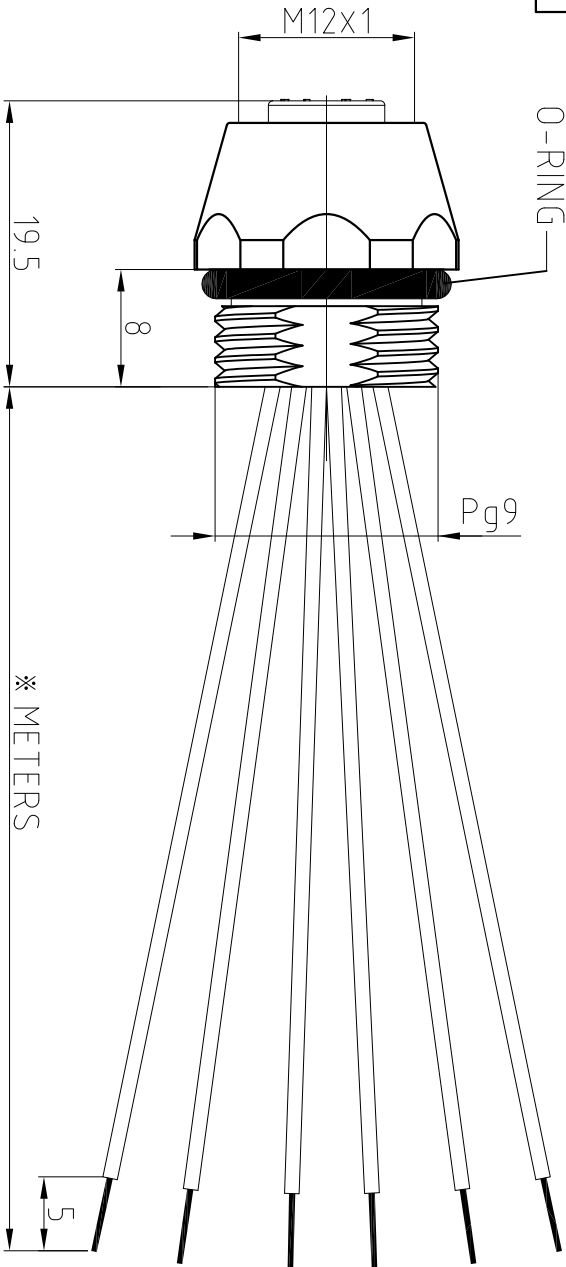
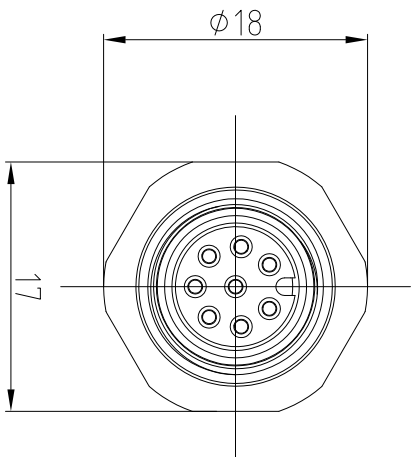
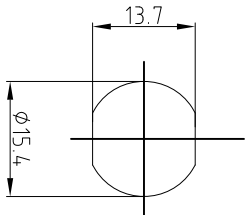


FEMALE END VIEW

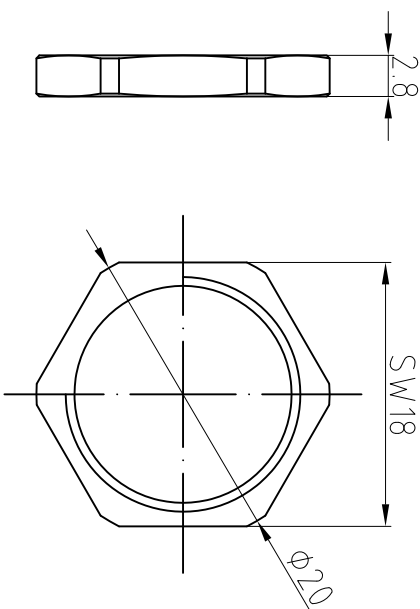
SUGGESTED PANEL CUT OUT



- 1=W/H
2=BN
3=GN
4=YE
5=GY
6=PK
7=BU
8=RD



SPECIFICATIONS	
CONTACT CARRIER MATERIAL/COLOR	TPU/BLACK
CONTACT/PLATING	BRASS/GOLD
HOUSING MATERIAL/PLATING	BRASS/NICKEL
O-RING MATERIAL	FKM/NBR
OPERATING CURRENT	2 A
OPERATING VOLTAGE	60 V
CONDUCTOR INSULATION MATERIAL	PVC
NUMBER OF CONDUCTORS (AWG)	8 x 24 AWG
OPERATING TEMPERATURE	-20°C — +85°C
PROTECTION CLASS	IEC IP67



CABLE LENGTH	TOLERANCE
ALL LENGTHS	±4%(OR 50mm) OF LENGTH -0%(OR 0mm) OF LENGTH WHICHEVER IS GREATER
STRIP LENGTH	TOLERANCE
0 - 7mm	± 1.0mm
8 - 29mm	± 1.5mm
30 - 49mm	± 2.0mm
50 - 69mm	± 3.0mm
70 - 100mm	± 4.0mm
over 100mm	± 5.0mm

UNIT OF MEASUREMENT
MILLIMETER

Tianjin Geneuo Technology Co., Ltd

Approved:
Date: 2018.4.27

Description:
FEK821-*

Process YJF
Date: 2018.5.24
Scale: 1:1

www.gsee-tech.cn
www.gsee-tech.com

REV	COUNT	DESCRIPTION OF REVISIONS	BY	CHECKED	DATE	3RD Angle Projection	REV
							A